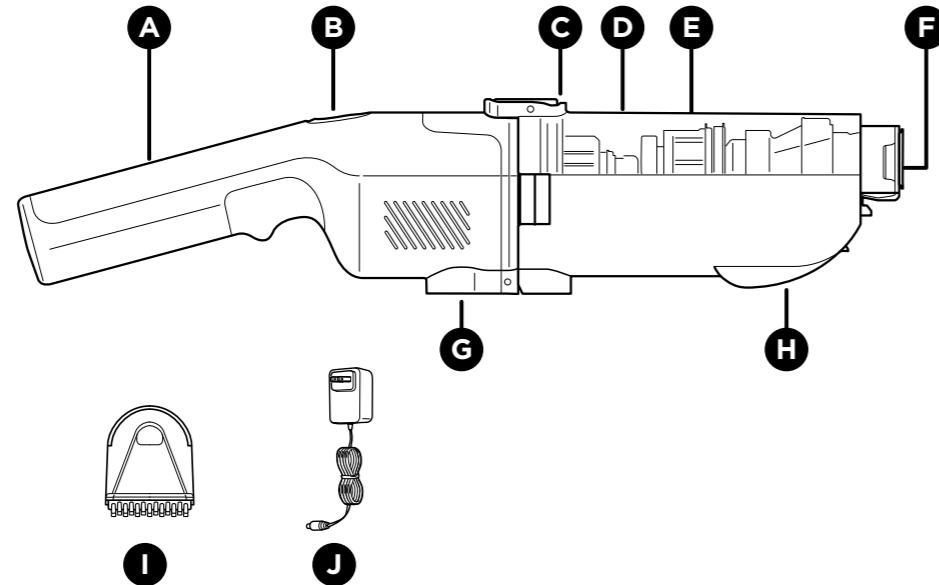


# QUICK START GUIDE

## WHAT'S INCLUDED

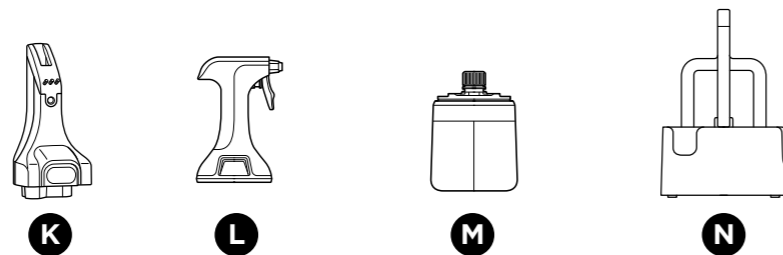
### Box Top Layer (Unit Assembly)

- A** Handle
- B** Power Button
- C** Dirty Water Tank Release
- D** Dirty Water Tank
- E** Water Separator Motor
- F** Hair Filter
- G** Charging Contact
- H** Quick Pour
- I** Stain Tool
- J** Charger

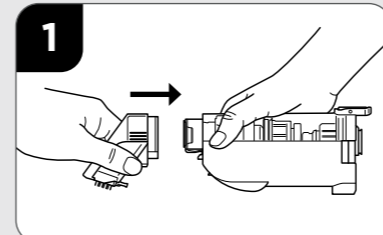


### Box Bottom Layer (Tool, Bottle, Storage Caddy)

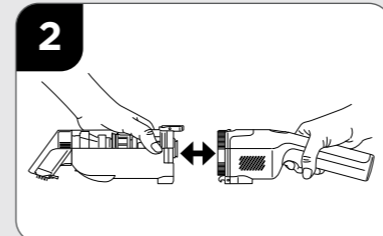
- K** Crevice Tool
- L** Reusable Solution Sprayer
- M** Shark® Refill Cartridge
- N** Storage Caddy



## UNIT ASSEMBLY

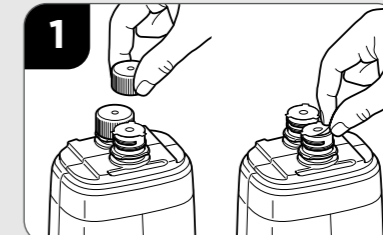


**1** Align Stain Tool with the end of the Dirty Water Tank. Insert the tool onto the tank until it clicks into place.

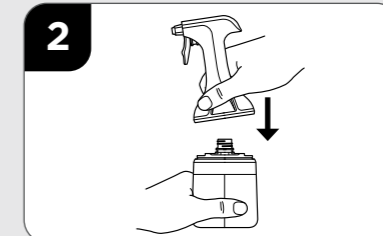


**2** Align the handle with the other end of the tank, then insert the handle until it clicks securely into place.

## SPRAY BOTTLE ASSEMBLY

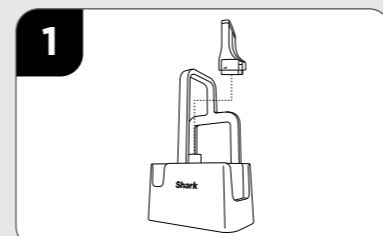


**1** Twist off both caps on the cleaning solution bottle, then peel off the foil seals.

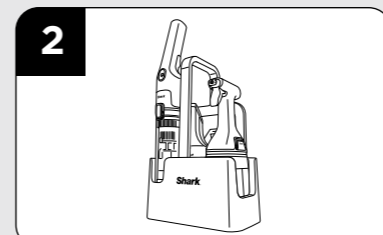


**2** Press the sprayer down over the openings on top of the bottle. Make sure it clicks securely into place.

## CADDY



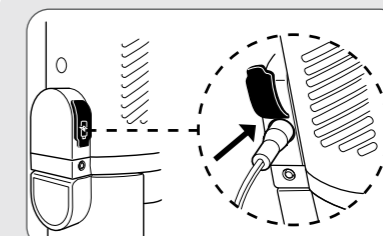
**1** Place the Crevice Tool (K) onto the Caddy tool post.



**2** Place the StainForce, Spray Bottle, into the Caddy and clip the charger onto the unit.

**NOTE:** StainForce can only be stored in the Caddy with the Stain Tool (I) attached. Not all accessories come with all units and may vary by model. Visit [sharkclean.com](http://sharkclean.com) for more details.

## CHARGING



Connect the charger pin to the charging port on the side of the unit.

**NOTE:** Charge StainForce fully before use. It can take up to 4 hours to charge completely.

## HOW TO USE



**RECOMMENDED:**

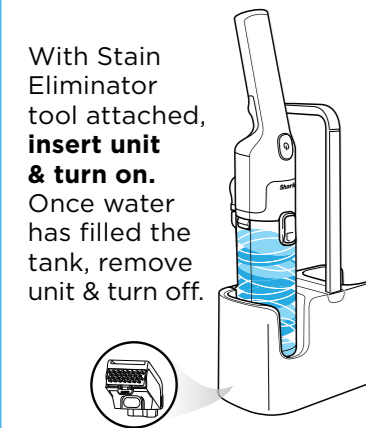
Perform Self Wash after assembling.

**QUICK SELF WASH**

Before starting, empty tank of any liquid.



Fill caddy cup to MAX FILL line with clean water. **DO NOT USE SOAP.**



With Stain Eliminator tool attached, **insert unit & turn on.** Once water has filled the tank, remove unit & turn off.

Empty device of any remaining liquid before storing.

For the very best **STAINFORCE** cleaning results follow these steps.

**WET STAIN?**

**1**

**1. EXTRACT SPILL**  
First, suction up the liquid spill to prevent spreading the stain.

**DRY STAIN?**

**1**

**1. SCRUB STAIN & EXTRACT**  
Scrub stain back and forth using bristles or fins, then, turn on unit, tilt handle, and drag backwards to extract dry debris.

**2**

**SPRAY TO SATURATE (X2)**

**2. SPRAY**  
Spray cleaning solution to over-saturate, 2 inches from the stain.  
**Let soak for a few minutes and spray again.** Apply at least 2 layers of solution.

**3**

**SCRUB TO AGITATE STAIN**

**3. SCRUB**  
Lay bristles flat on the surface & scrub the stain back and forth firmly. See below for bristle info.

**4**

**EXTRACT USING PRESSURE**

**4. EXTRACT**  
For best suction be sure to tilt up (as shown) and apply pressure. Slowly pull backwards to extract the solution. **Pull back only.**

REPEAT STEPS 2-4 UNTIL STAIN FULLY FADES.  
**LET DRY.**



**HOW-TO VIDEOS**  
Scan QR code to watch now.

**Spray Modes**

**MIST**   **STREAM**  
Twist spray tip to choose flow.

**Reversible Bristle Plate**

**BRISTLES** Deep cleaning & agitation.  
**FINS** For delicate or hairy surfaces.

For full cleaning instructions, see manual for more detail.